

# Product Line-up

## Servomotors

### ◆Rotary Servomotors (Small Capacity)



SGMMV: 3.3 W to 30 W  
(Low Inertia, Small Capacity)



SGMJV: 50 W to 750 W  
(Medium Inertia, Small Capacity)



SGMAV: 50 W to 1 kW  
(Low Inertia, Small Capacity)

### ◆Rotary Servomotors (Medium Capacity)



SGMGV: 300 W to 15 kW  
(Medium Inertia, Medium Capacity)



SGMSV: 1.0 kW to 7.0 kW  
(Low Inertia, Medium Capacity)

### ◆Direct Drive Servomotors



SGMCS: 2 to 3.5 Nm  
(Small Capacity)



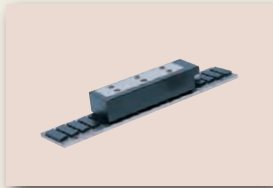
SGMCS: 45 to 200 Nm  
(Medium Capacity)

### ◆Linear Servomotors

#### Linear $\Sigma$ Series



SGLGW (Coreless Type)  
12.5 to 750 N



SGLFW (With F-type Iron Core)  
25 to 1120 N



SGLTW (With T-type Iron Core)  
130 to 1300 N

### ◆Linear Slides $\Sigma$ -Trac Series



SGT1F ( $\Sigma$ -Trac)  
47 to 560 N

## SERVOPACKs with AC Power Input

### ◆ Analog Voltage/Pulse Train Reference



SGDV-000001/05

### ◆ MECHATROLINK-II Reference



SGDV-000011/15

### ◆ MECHATROLINK-III Reference



SGDV-000021/25

### ◆ Command Option Attachable Type



SGDV with Additional Options

Available Option Modules include:

- EtherCAT (CoE) Communication
- Fully Closed Loop Control
- MP2600iec Single Axis Controller
- Functional Safety
- Indexer

## SERVOPACKs with DC Power Input

### ◆ Analog Voltage Reference



SGDV-0000ES1

### ◆ Pulse Train Reference



SGDV-0000EP1

### ◆ MECHATROLINK-II Reference



SGDV-0000E11

### ◆ MECHATROLINK-III Reference



SGDV-0000E21

## ◆ Stock Status Definitions

The product selection tables in this catalog contain stock status codes, which are subject to change. The codes are defined below:

### **S** Stock Item

Normally 3 to 5 days leadtime for most order quantities. 3 to 5 weeks maximum if temporary outages occur. For critical lead time or large quantity shipments, check with your Yaskawa sales representative.

### **LS** Limited Stock Item

Typically small quantities are available from stock. Items may become stock items as demand increases.

### **NS** Non-Stock Item

Non-stock items typically carry a 12 - 16 week delivery time.

### **GS** Global Support Item

Global Support Products are non-stock items that are not promoted in North America. Delivery is typically 14-20 weeks depending on price availability. Local repair and service capabilities may be limited. Customers should consider stock or limited stock substitutes if possible. Global Support Products are found on some machines imported to North America. In many cases the fastest delivery of spare parts can be obtained by contacting the original machine builder. Yaskawa Electric America can make special arrangements for servicing customers on a contract basis.

◆Rotary Servomotors and SERVOPACKs with AC Power Input

Rotary Servomotor Model		Capacity	SERVOPACK Model SGD□□□□			Stock Status	
			Single-phase 100 VAC	Three-phase 200 VAC	Three-phase 400 VAC		
SGMMV (Ultra-Small Capacity) 3000RPM	SGMMV-A1A	10 W	R90F	R90A	—	S	
	SGMMV-A2A	20 W		R90A			
	SGMMV-A3A	30 W		1R6A			
SGMJV (Medium Inertia, Small Capacity) 3000RPM	SGMJV-A5A	50 W	R70F	R70A	—	S	
	SGMJV-01A	100 W	R90F	R90A			
	SGMJV-C2A	150 W	2R1F	1R6A			
	SGMJV-02A	200 W	2R1F	1R6A			
	SGMJV-04A	400 W	2R8F	2R8A			
	SGMJV-06A	600 W	—	5R5A			
	SGMJV-08A	750 W	—	5R5A			
SGMAV (Low Inertia, Small Capacity) 3000RPM	SGMAV-A5A	50 W	R70F	R70A	—	S	
	SGMAV-01A	100 W	R90F	R90A			
	SGMAV-C2A	150 W	2R1F	1R6A			
	SGMAV-02A	200 W					
	SGMAV-04A	400 W	2R8F	2R8A			
	SGMAV-06A	550 W	—	5R5A			
	SGMAV-08A	750 W					
SGMAV-10A	1.0 kW	—	120A <sup>*1</sup>				
SGMGV (Medium Inertia, Medium Capacity) 1500RPM	SGMGV-03A	300 W	—	3R8A	—	S	
	SGMGV-05A	450 W		7R6A			
	SGMGV-09A	850 W		120A			
	SGMGV-13A	1.3 kW		180A			
	SGMGV-20A	1.8 kW		330A/200A <sup>*2</sup>			
	SGMGV-30A	2.9 kW		330A			
	SGMGV-44A	4.4 kW		470A			
	SGMGV-55A	5.5 kW		550A			
	SGMGV-75A	7.5 kW		590A			
	SGMGV-1AA	11 kW		780A			
	SGMGV-1EA	15 kW		—			1R9D
	SGMGV-03D	300 W		—			3R5D
	SGMGV-05D	450 W		—			5R4D
	SGMGV-09D	850 W		—			8R4D
	SGMGV-13D	1.3 kW		—			120D
	SGMGV-20D	1.8 kW		—			170D
	SGMGV-30D	2.9 kW		—			210D
SGMGV-44D	4.4 kW	—	260D				
SGMGV-55D	5.5 kW	—	280D				
SGMGV-75D	7.5 kW	—	370D				
SGMSV (Low Inertia, Medium Capacity) 3000RPM	SGMSV-10A	1.0 kW	—	7R6A	—	S	
	SGMSV-15A	1.5 kW		120A			
	SGMSV-20A	2.0 kW		180A			
	SGMSV-25A	2.5 kW		200A			
	SGMSV-30A	3.0 kW					
	SGMSV-40A	4.0 kW		330A			
	SGMSV-50A	5.0 kW					
	SGMSV-70A	7.0 kW		550A			
	SGMSV-10D	1.0 kW		—			3R5D
	SGMSV-15D	1.5 kW					5R4D
	SGMSV-20D	2.0 kW					8R4D
	SGMSV-25D	2.5 kW					120D
	SGMSV-30D	3.0 kW					
	SGMSV-40D	4.0 kW					
	SGMSV-50D	5.0 kW					

\*1: Single-phase 200 VAC SERVOPACKs are also available (SERVOPACK model: SGD□V-120A□□A008000).

\*2: The combination of the SGD□V-200A SERVOPACK and the SGM□V-30A servomotor must be used at the following reduction ratings.

		Reduction Ratings	Ratings
Rated Current	$I_{rms}$	19.6	23.8
Rated Torque	Nm	15.3	18.6
Allowable Load Moment of Inertia		3 times	5 times

◆Rotary Servomotors and SERVOPACKs with DC Power Input

Rotary Servomotor Model		Capacity	SERVOPACK Model SGD□-□□□□		Stock Status
			24 VDC/48 VDC		
SGMMV (Low Inertia, Ultra-small Capacity) 3000 min-1	SGMMV-B3E	3.3 W	1R7E	S	
	SGMMV-B5E	5.5 W			
	SGMMV-B9E	11 W			
	SGMMV-A1E	10 W	2R9E		
	SGMMV-A2E	20 W			
SGMMV-A3E	30 W				

◆Linear Servomotors and SERVOPACKs with AC Power Input

Linear Servomotor Model		Rated Force N	Peak Force N	SERVOPACK Model SGD□-□□□□			Stock Status		
				Single-phase 100 VAC	Three-phase 200 VAC	Three-phase 400 VAC			
SGLGW (Coreless Type, With standard magnetic way)	SGLGW-30A050C	12.5	40	R70F	R70A	—	S		
	SGLGW-30A080C	25	80	R90F	R90A				
	SGLGW-40A140C	47	140	2R1F	1R6A				
	SGLGW-40A253C	93	280						
	SGLGW-60A140C	70	220	2R8F	2R8A				
	SGLGW-40A365C	140	420						
	SGLGW-60A253C	140	440	—	5R5A				
	SGLGW-60A365C	210	660		120A				
	SGLGW-90A200C	325	1300		180A				
	SGLGW-90A370C	550	2200		200A				
SGLGW-90A535C	750	3000							
SGLGW (Coreless Type, With high-efficiency magnetic way)	SGLGW-40A140C	57	230	2R1F	1R6A	—	NS		
	SGLGW-60A140C	85	360	2R8F	2R8A				
	SGLGW-40A253C	114	460		—			3R8A	
	SGLGW-40A365C	171	690	7R6A					
	SGLGW-60A253C	170	720						
SGLFW (With F-type Iron Core)	SGLFW-20A090A	25	86	2R1F	1R6A	—	S		
	SGLFW-20A120A	40	125						
	SGLFW-35A120A	80	220						
	SGLFW-35A230A	160	440	—	3R8A				
	SGLFW-50A200B	280	600		5R5A				
	SGLFW-50A380B	560	1200		120A				
	SGLFW-1ZA200B	560	1200						
	SGLFW-1ZA380B	1120	2400	—	200A			1R9D	
	SGLFW-35D120A	80	220						
	SGLFW-35D230A	160	440					—	3R5D
	SGLFW-50D200B	280	600						5R4D
	SGLFW-50D380B	560	1200						120D
	SGLFW-1ZD200B	560	1200						
	SGLFW-1ZD380B	1120	2400						
SGLTW (With T-type Iron Core)	SGLTW-20A170A	130	380			—	3R8A	—	NS
	SGLTW-35A170A	220	660	5R5A					
	SGLTW-35A170H	300	600	7R6A					
	SGLTW-50A170H	450	900						
	SGLTW-20A320A	250	760	120A					
	SGLTW-20A460A	380	1140						
	SGLTW-35A320A	440	1320						
	SGLTW-35A320H	600	1200						
	SGLTW-50A320H	900	1800	180A					
	SGLTW-35A460A	670	2000						
	SGLTW-40A400B	670	2600	330A					
	SGLTW-40A600B	1000	4000						
	SGLTW-80A400B	1300	5000	—	3R5D				
	SGLTW-35D170H	300	600						
	SGLTW-50D170H	450	900				8R4D		
	SGLTW-35D320H	600	1200						
	SGLTW-50D320H	900	1800				120D		
	SGLTW-40D400B	670	2600						
	SGLTW-40D600B	1000	4000						
	SGLTW-80D400B	1300	5000				170D		

### ◆Linear Slides ( $\Sigma$ -Trac) and SERVOPACKs

Linear Slide Model		Rated Force N	Peak Force N	SERVOPACK Model SGD□-□□□□		Stock Status
				Single-phase 100 VAC	Three-phase 200 VAC	
SGT1F ( $\Sigma$ -Trac)	SGT1F31-	80	220	2R1F	1R6A	LS
	SGT1F41-	160	440	—	3R8A	
	SGT1F91-	280	600		5R5A	
	SGT1FA1-	560	1200		120A	
SGTMM ( $\Sigma$ -Trac- $\mu$ )	SGTMM-01	3.5	10		R70F	R70A
	SGTMM-03	7	25	R90F	R90A	
SGTMF ( $\Sigma$ -Trac-MAG)	SGTMF-4A	90	270	2R1F	1R6A	GS
	SGTMF-4B	120	360			
	SGTMF-5A	180	540	—	5R5A	
	SGTMF-5B	240	720			

### ◆Direct Drive Servomotors and SERVOPACKs

Direct Drive Servomotor Model		Rated Torque N m	Peak Torque N m	SERVOPACK Model SGD□-□□□□		Stock Status
				Single-phase 100 VAC	Three-phase 200 VAC	
SGMCS (Small Capacity)	SGMCS-02B	2	6	2R1F	2R8A	S
	SGMCS-05B	5	15			
	SGMCS-07B	7	21			
	SGMCS-04C	4	12	2R8F		
	SGMCS-10C	10	30			
	SGMCS-14C	14	42			
	SGMCS-08D	8	24			
	SGMCS-17D	17	51			
	SGMCS-25D	25	75			
	SGMCS-16E	16	48			
SGMCS-35E	35	105	—	5R5A		
SGMCS (Medium Capacity)	SGMCS-45M	45	135	—	7R6A	S
	SGMCS-80M	80	240		120A	
	SGMCS-80N	80	240		180A	
	SGMCS-1AM	110	330		200A	
	SGMCS-1EN	150	450			
	SGMCS-2ZN	200	600			